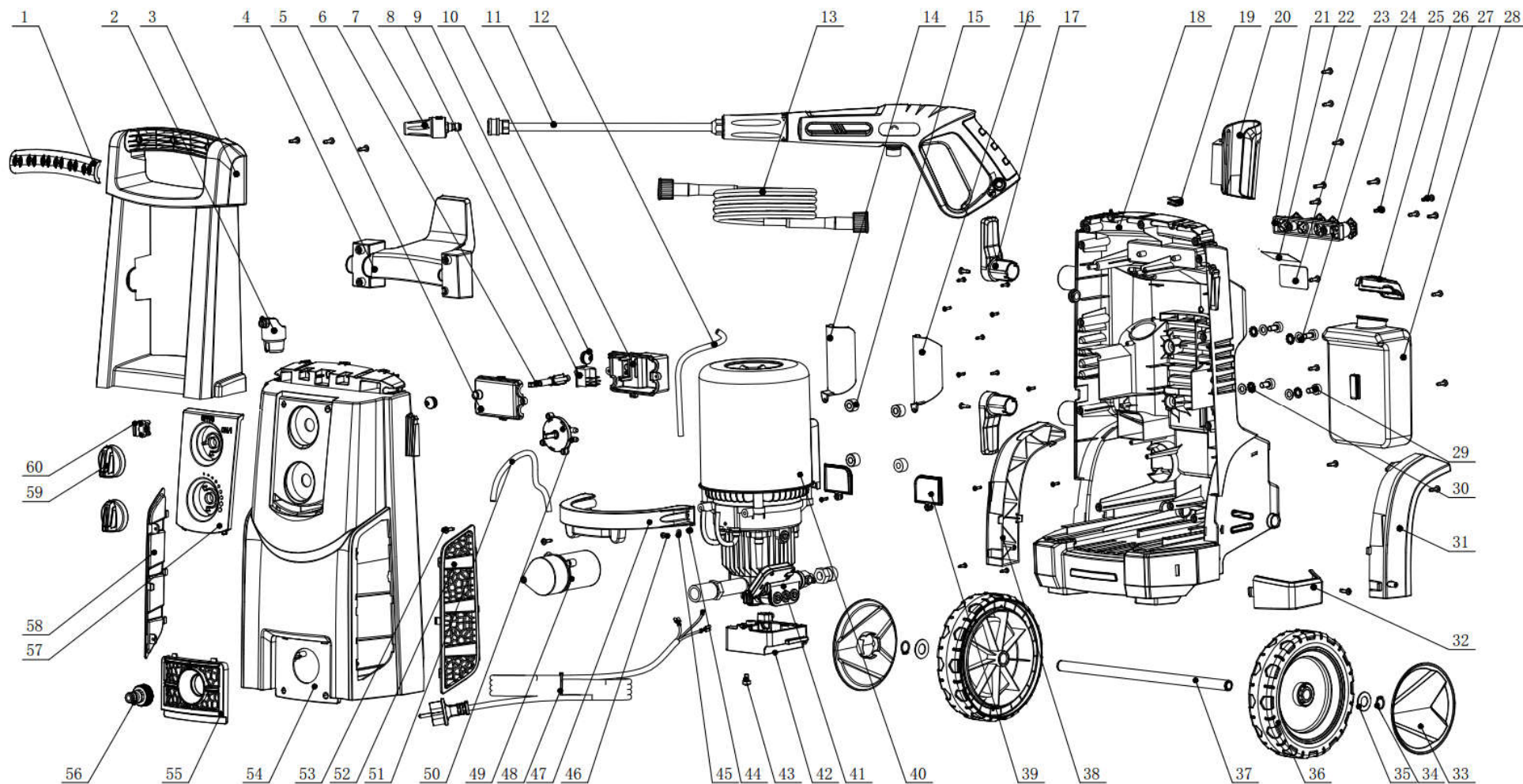


Мойка высокого давления MD195 DEKADO

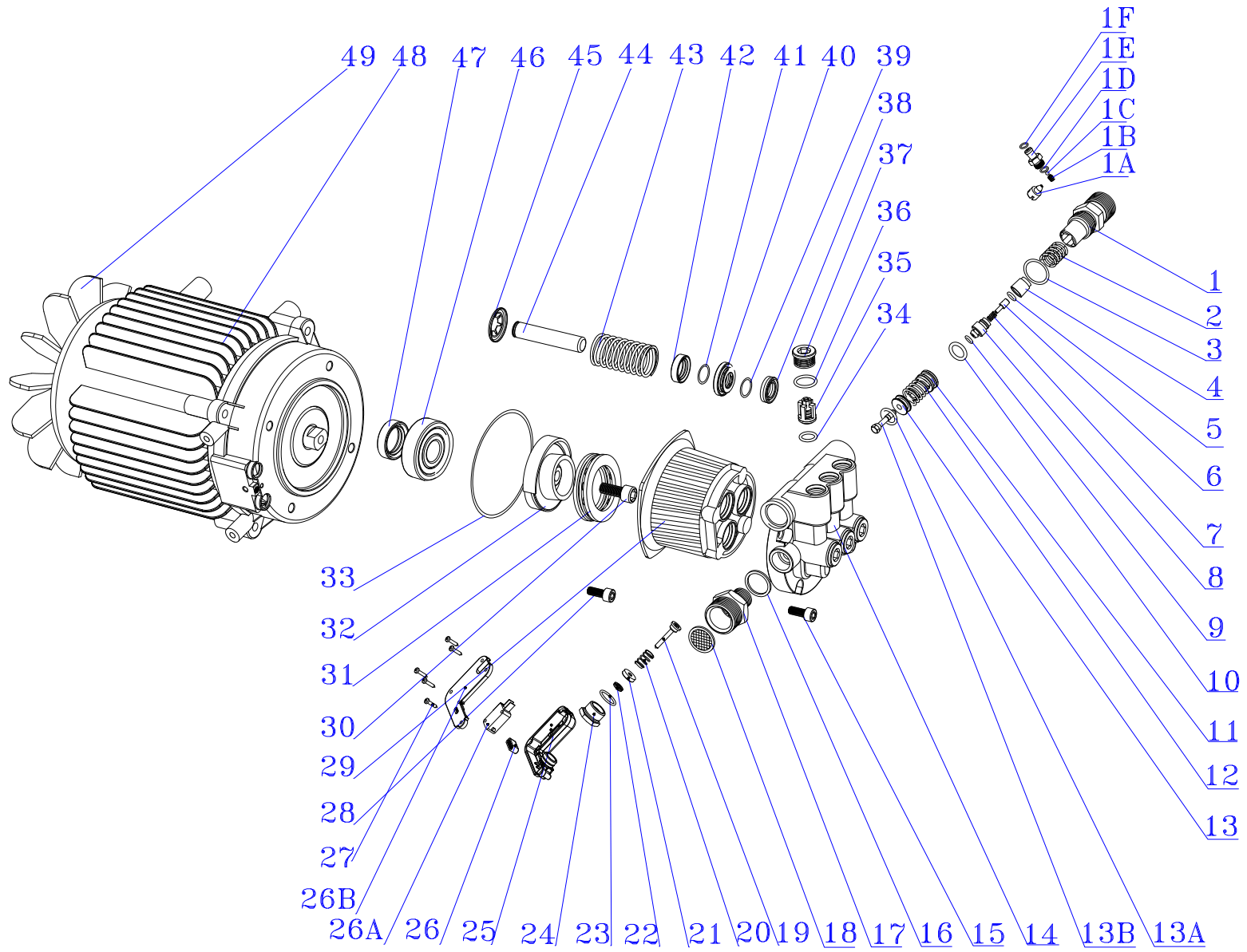


REF	DESCRIPTION	QTY
1	HANDLE CAP 手柄盖	1
2	turbo nozzle holder 莲花喷头固定架	1
3	HANDLE 手柄	1
4	Hose hook 挂管钩	1
5	switch BOX CAP 开关盒盖	1
6	Nager 拔杆	1
7	TURBO NOZZLE 莲花喷头	1
8	SWITCH 开关	1
9	CABLE SEAL 电缆密封圈	4
10	SWITCH BOX 开关盒	1
11	SPRAY GUN 喷枪	1
12	SOAP TUBE 内置吸液管	1
13	HOSE 高压管	1
14	DASH plate of left accessory 左附件挡水板	1
15	VIBRATION DAMPING OF MOTOR 电机减震圈	4
16	DASH PLATE OF RIGHT ACCESSORY 右附件挡水板	1
17	CABLE HOOK 挂线钩	1
18	BOTTOM HOUSING 后壳	1
19	HOSE BLOCK 高压管孔塞	1
20	GUN HOOK 枪挂架	1
21	NOZZLES HOLDER SETS 喷嘴固定架组件	1
22	PVC LOGO LABEL 铭牌	1
23	PVC WARNING LABEL 警告标贴	1
24	SPRING GASKET 弹簧垫圈	4
25	SCREW ST4.8*16	28
26	SOAP TANK CAP 吸液壶盖	1
27	SCREW ST4.8*25	3
28	BUILT-IN SOAP TANK 内置吸液壶	1

REF	DESCRIPTION	QTY
31	RIGHT WHEEL PLATE 右滚轮檐	1
32	GUN HOLDER 枪托	1
33	WHEEL CAP 轮盖	2
34	ELASTIC COLLAR 轴用弹性挡圈	2
35	FLAP GASKET 平垫圈	2
36	WHEEL 包胶滚轮	2
37	WHEEL AXLE 轮轴	1
38	LEFT WHEEL PLATE 左滚轮檐	1
39	DASH PLATE 挡水板	2
40	WIND SCOOPER 导风罩	1
41	MOTOR AND PUMP 电机泵组件	1
42	PUMP FIXXING SEAT 150 泵固定座	1
43	SCREW M6*10	1
44	SAWTOOTH GASKET 锯齿垫片	1
45	SPRING GASKET 弹簧垫圈	1
46	SCREW M4*8	1
47	PRESS PLATE OF MOTOR 电机压板	1
48	CABLE 电源线组件	1
49	CAPACITOR 电容组件	1
50	SWITCH FOR SOAP 调液开关组件	1
51	SOAP TUBE OUTSIDE 外置吸液管	1
52	RIGHT DECORATION PLATE 右装饰板	1
53	SCREW ST3.5*13F	16
54	upper housing 前壳	1
55	WATER OUTLET DECORATION PLATE 出水装饰板	1
56	WATER INLET MAIL CONNECTOR 进水公接头	1
57	SWITCH DECORATION PLATE 开关装饰板	1
58	LEFT DECORATION 左装饰板	1

29	SCREW M8*30	4
30	SAWTOOTH GASKET 锯齿垫片	4

59	SWITCH KNOB 旋钮组件	2
60	CABLE SHEATH 电源线护套	1



REF	DESCRIPTION	QTY
1	KIT, WATER OUTLET JOINT 出水接头	1
1A	Absorption core 吸液芯子	1
1B	SPRING OF Absorption 吸液弹簧	1
1C	STEEL BALL 钢球 5	
1D	O-RING, $\Phi 7 \times 1.5 \text{MM}$	
		1
		1
1E	junction 吸液接头	1
1F	O-RING, $\Phi 10 \times 1.5 \text{MM}$	1
2	O-RING, $\Phi 22 \times 2.4 \text{MM}$	1
3	SPRING 弹簧 0.6X10.5X4.5X12	1
4	BLOCKING 端盖	1
5	O-RING, $\Phi 5 \times 1.8 \text{MM}$	1
6	VALVE CORE 阀芯	1
7	VALVE CORE SPRING 阀芯弹簧	1
8	JACKET 阀套	1
9	O-RING, $\Phi 4.5 \times 1.8 \text{MM}$	1
10	O-RING, 16X2.4 MM	1
11	PISTON 活塞	1
12	SPRING OF PISTON 活塞弹簧	1
13	RELIEF VALVE SEAT 卸荷阀座	1
13A	O-RING, $\Phi 15 \times 2.4 \text{MM}$	1
13B	RELIEF VALVE STEM 卸荷阀杆	1
14	PUMP HEAD 泵头	1
15	SCREW 内六角螺钉 M8X20	4
16	O-RING, $\Phi 18 \times 2.4 \text{MM}$	1

REF	DESCRIPTION	QTY
24	CONNECTING NUT 连接螺帽	1
25	RIGHT SHELL OF MICRO SWITCH 停水开关右壳	1
26	SLIDE 滑块	1
26A	MICROSWITCH 微动开关	1
26B	LEFT SHELL OF MICRO SWITCH 停水开关左壳	1
27	TAPPING SCREW 自攻螺钉	5
28	SCREW 内六角螺钉 M8X25	1
29	PUMP BODY 泵体	1
30	SCREW INTERNAL HEXAGONAL 内六角螺 M8X25	1
31	BEARING, 51207 轴承	1
32	BEARING HOUSING, AL ALLOY 轴承座	1
33	O-RING, O 型圈, $\Phi 90 \times 2.65$	1
34	O-RING, O 型圈, $\Phi 13 \times 1.9$	6
35	INLET&OUTLET VALVE 进水水阀	6
36	O-RING O 型圈 $\Phi 16 \times 1.9$	6
37	VALVE CAP 阀帽	6
38	V-RING V 型油封 $\Phi 14 \times 20 \times 5 \text{MM}$	3
39	O-RING O 型圈 $\Phi 18 \times 1.9$	3
40	INTERSPACE RINGER 中间套	3
41	O-RING O 型圈 $\Phi 24 \times 1.9$	3
42	REINFORCED SEAL 骨架油封 $\Phi 14 \times 22 \times 5 \text{MM}$	3
43	SPRING 柱塞弹簧	3
44	PLUNGER 柱塞 $\Phi 14$	3
45	PLUNGER CLIP 柱塞卡簧	3
46	BEARING 轴承	1
47	OIL SEAL 油封 20x30x9	1
48	INDUCTION MOTOR 感应电机	1

17	WATER INLET JOINT 进水接头	1
18	FILTER 滤网	1
19	SWITCH ROD 开关顶杆	1
20	SPRING 顶杆弹簧	1
21	RETAINING RING FOR CONNECTING NUT 连接螺帽挡圈	1
22	Y-RING Y 形圈 4X11X5	1
23	O-RING, $\Phi 21 \times 1.9$ MM	1

49	MOTOR SHEATH 电机护套	1
50	MOTOR ENCLOSURE 电机壳	1
51	CAPACITOR 电容	1
52	JUNCTION BOX 接线盒盖	1
53	SWITCH 开关	1
54	SWITCH COVER 开关罩	1